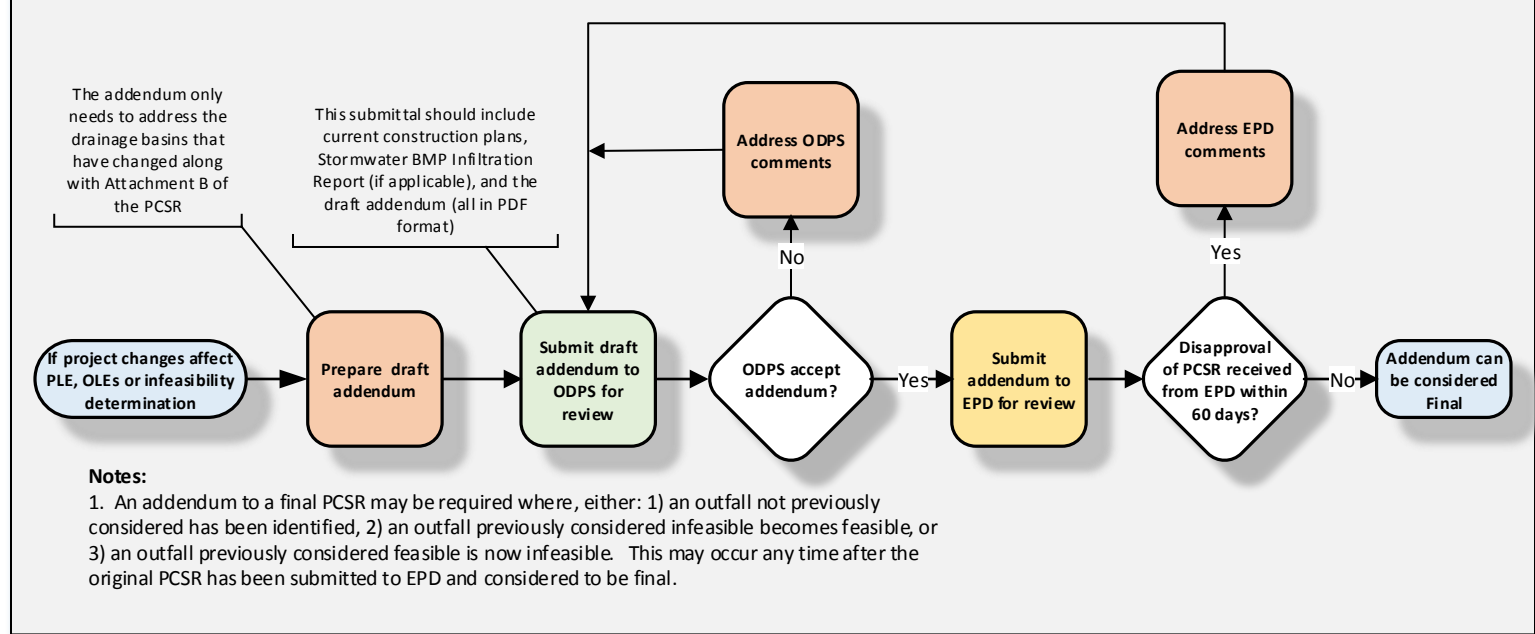
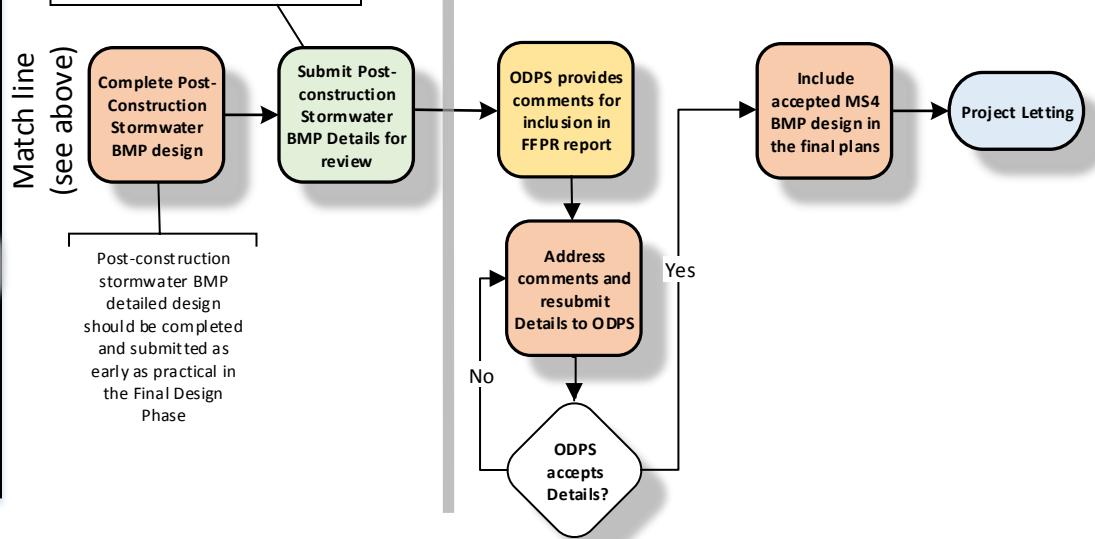


PCSR Addendum process (see Note 1 below)



This submittal should be made as part of the FFPR request. Include FFPR plans, Stormwater BMP Infiltration Report and any PCSR Addendums (if applicable), and the accepted PCSR - all in PDF format. Submit via ProjectWise and email [stormreports@dot.ga.gov](mailto:stormreports@dot.ga.gov) indicating report has been uploaded.



List of Acronyms:

- BMP = Best Management Practice / structural device used to treat or store stormwater runoff
- DDM = Manual on Drainage Design for Highways
- EPD = Georgia Environmental Protection Division
- FFPR = Final Field Plan Review
- GaDNR = Georgia Department of Natural Resources
- MS4 = Municipal Separate Storm Sewer System
- OEnvS = Office of Environmental Services
- ODPS = Office of Design Policy and Support
- OLE = Outfall Level Exclusion
- OMAT = Office of Materials and Testing
- PCSR = MS4 Post-Construction Stormwater Report
- PDP = Plan Development Process
- PFPR = Preliminary Field Plan Review
- PIOH = Public Information Open House
- PLE = Project Level Exclusion
- PM = GDOT Project Manager
- ROW = Right-of-way